

PHOTOGRAPHING ITS OWN SHADOW, THE NAVY "CRUSADER" STREAKS LOW OVER WATER BEFORE LANDING. BLURRED BACKGROUND INDICATES THE PLANE'S SPEED

## PHOTO STORY OF RECORD 203-MINUTE FLIGHT

# SUPERSONIC VIEW OF U.S.

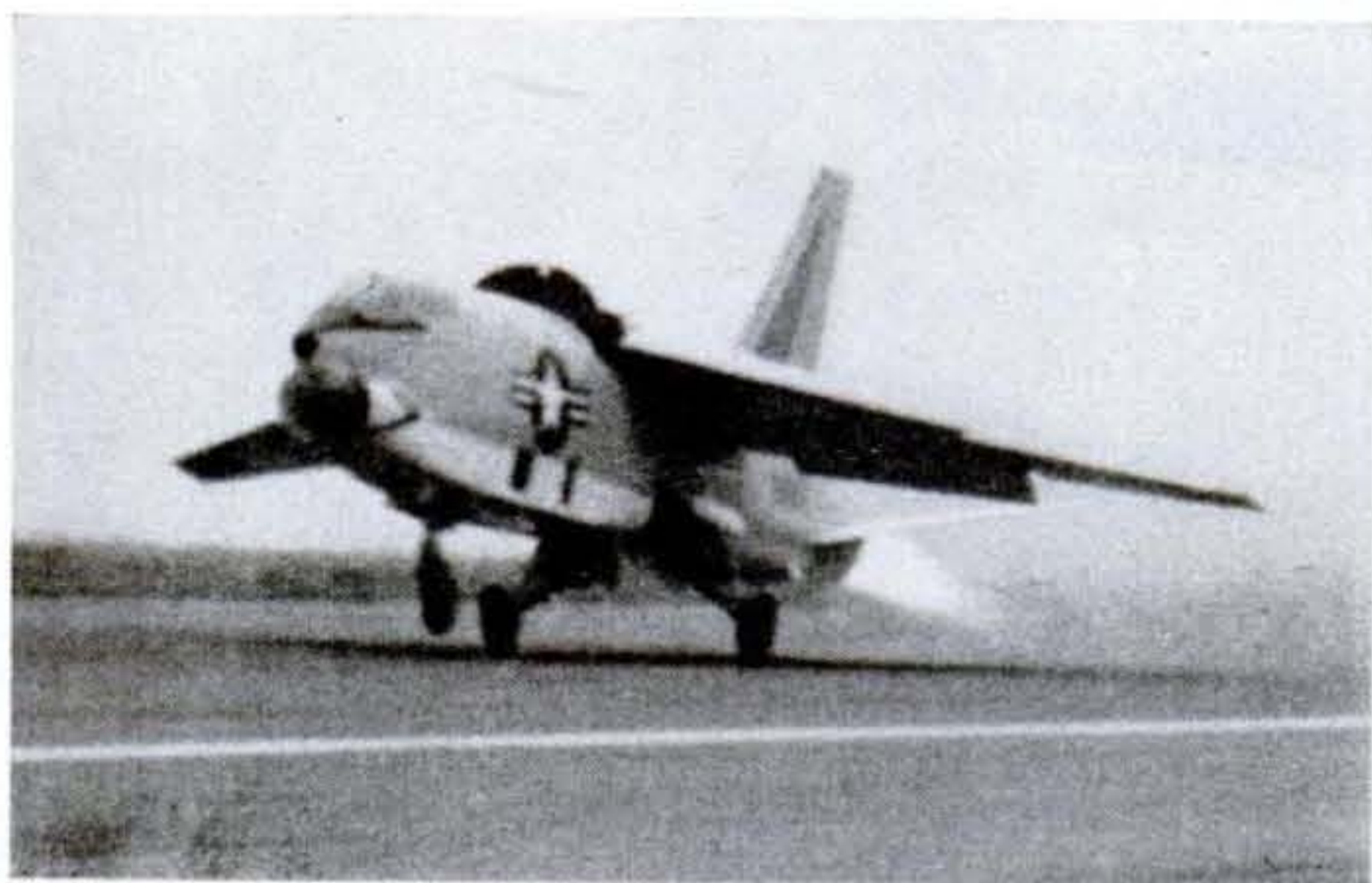
At 9:04 E.D.T. one morning last week, Marine Major John H. Glenn Jr. took off from Los Angeles in his Navy F8U jet *Crusader*. Three hours, 23 minutes and 8.4 seconds later he touched down at Floyd Bennett Field in New York. The 2,460-mile flight not only shaved 22 minutes off the previous transcontinental record, set in 1955 by the U.S. Air Force, but it made aviation history as the first supersonic flight across the U.S. Though Major Glenn had to slow down three times en route to 340 mph to take on fuel from propeller-driven tankers—and descend to 25,000 feet to make the refueling rendezvous—he flew at an average altitude of 35,000 feet and at an average speed, which is supersonic for that altitude, of 726 mph.

The plane also made another kind of record—a photographic one of its own flight. Six aerial cameras mounted in the plane's belly—three shooting straight down and three aimed at oblique angles forward and to each side—clicked away automatically at regular intervals to make continuous strips of aerial photographs from its take-off to its landing. Except over portions of the West and Midwest where there was a heavy cloud cover, the cameras recorded in clear detail every house, stream, road and factory the plane passed over. The pictures on these pages, which were taken from the Navy's aerial film exposed on Major Glenn's record flight, are part of the first supersonic portrait of the U.S. ever made from one coast to the other.

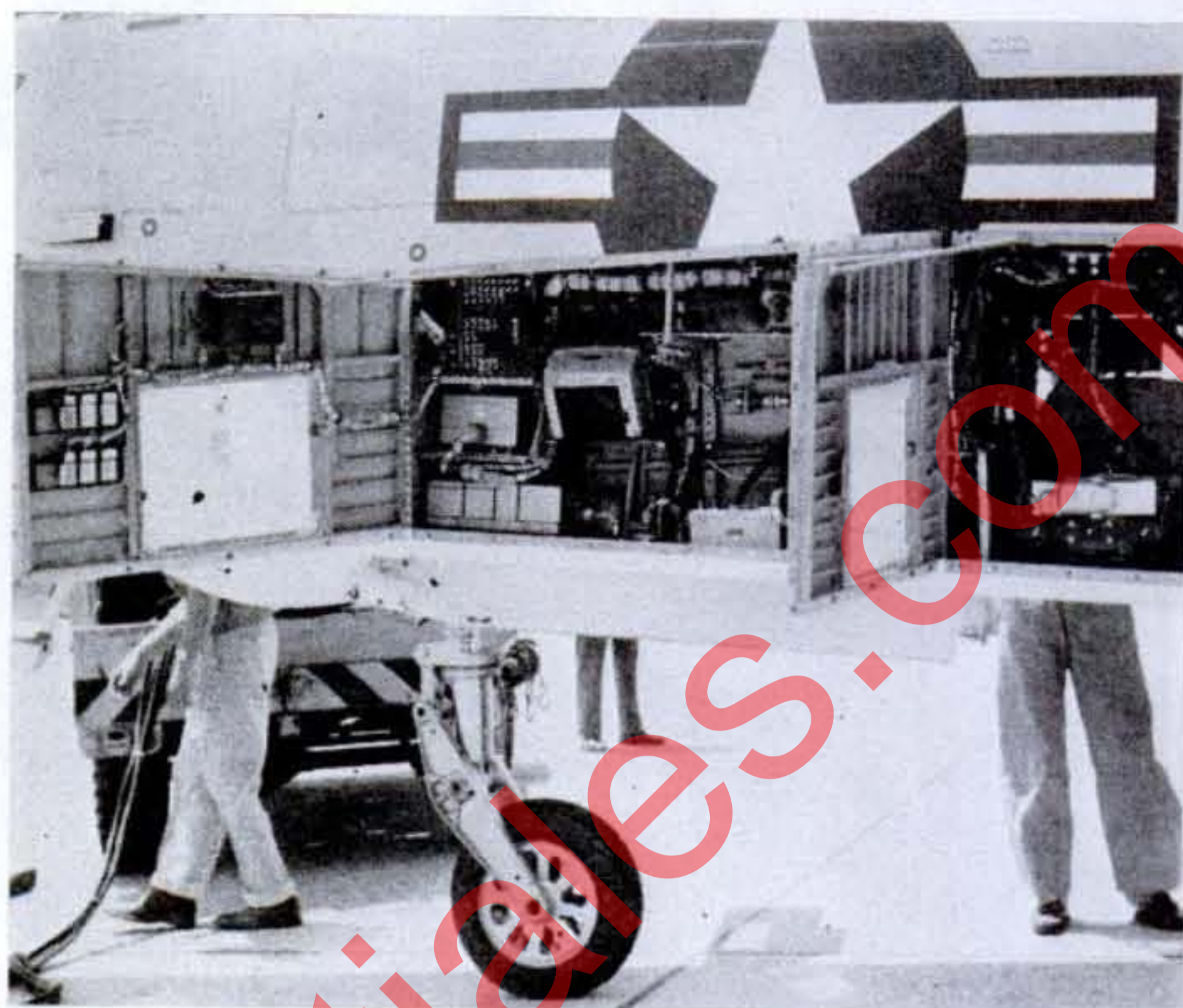


REWARD FOR FLIGHT is Distinguished Flying Cross awarded to Glenn by Navy Secretary Gates.

# DESERT, CITIES AND THE SONIC BOOMS



**ON TAKE-OFF** at the Los Alamitos Naval Air Station in California, Major Glenn turns on the Chance Vought plane's jet afterburner to get up maximum speed.

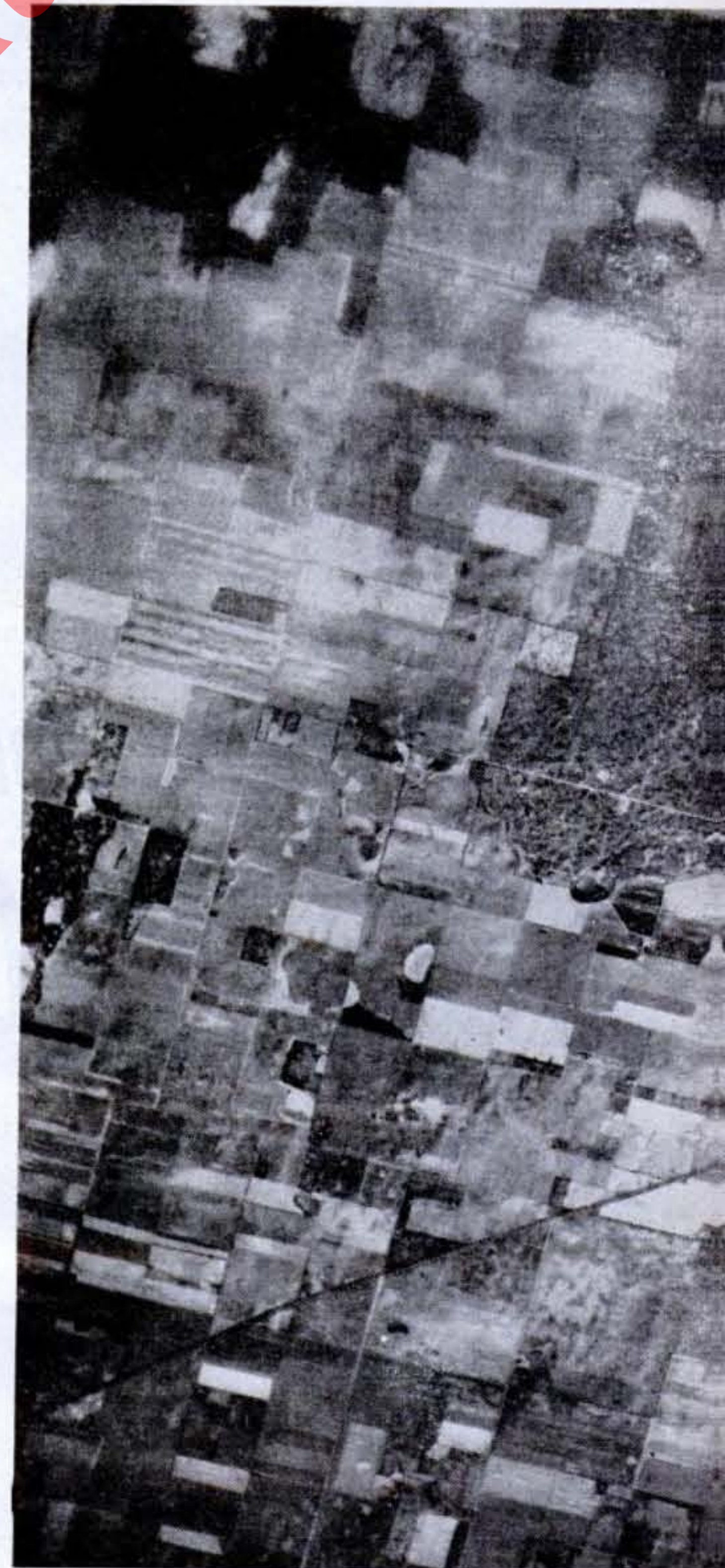


**BANK OF CAMERAS**, here opened up, includes an oblique camera (for angled views) in center and vertical camera at far right. Both were built by Fairchild.



**CALIFORNIA DESERT** is photographed by port-side camera 13 minutes after take-off. The jet has

already passed Palm Springs at a cruising altitude of 45,000 feet and is headed toward New Mexico.



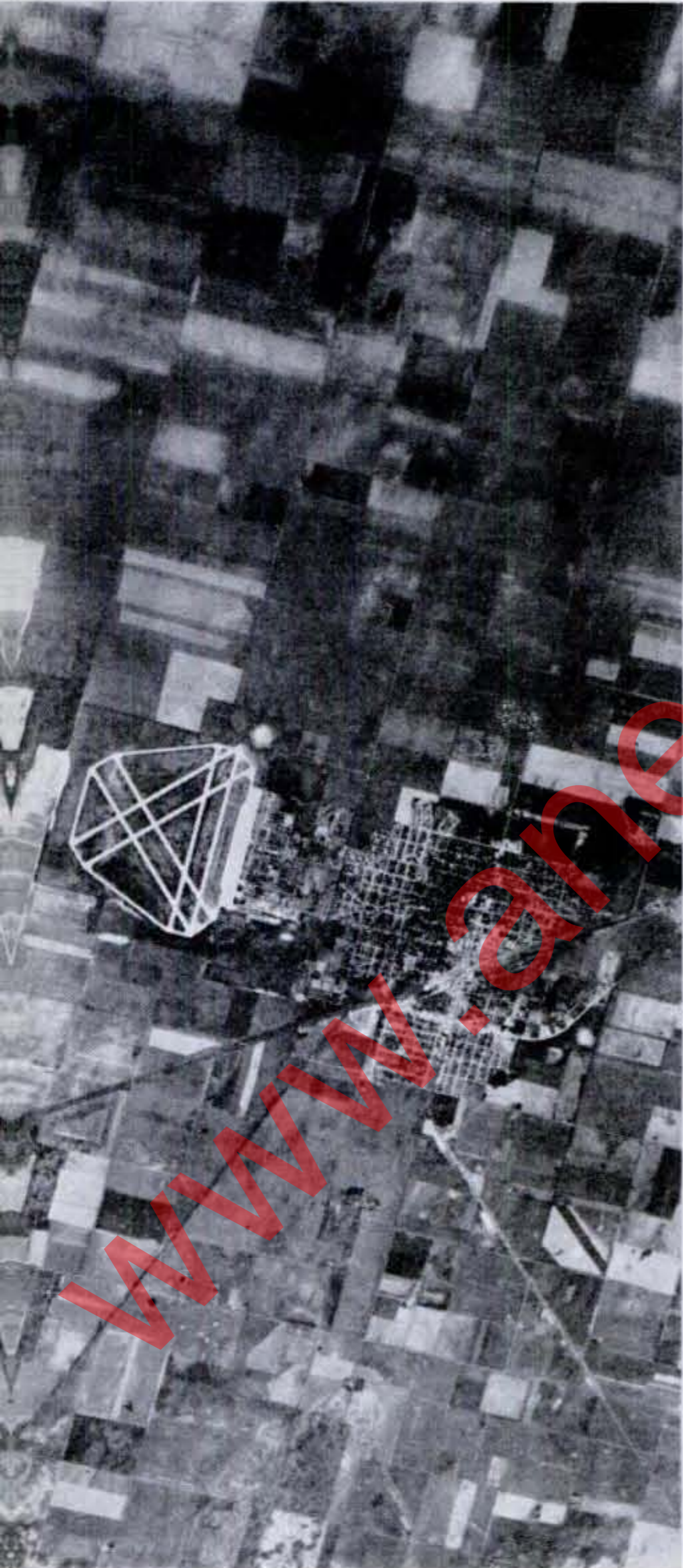
**LIBERAL, KAN.**, photographed from 48,500 feet, sits astride the Rock Island railroad which runs



**SONIC BOOM AREA** was above puffy clouds near Terre Haute, Ind. The plane's descent for refueling produced what Terre Haute residents heard as a loud crack.



**COLLAPSED CEILING** in Terre Haute home of Mr. and Mrs. Louis Howerton was result, they claim, of sonic shock wave aimed at ground by descending jet. →



diagonally across picture. Crisscross pattern marks old U.S. Army field now used as a municipal airport.



**MONONGAHELA RIVER** winds past Pittsburgh (off top) and McKeesport, Pa. (center) where the

Youghiogheny River joins it. Picture, which is one frame from vertical strip, takes in 100 square miles.

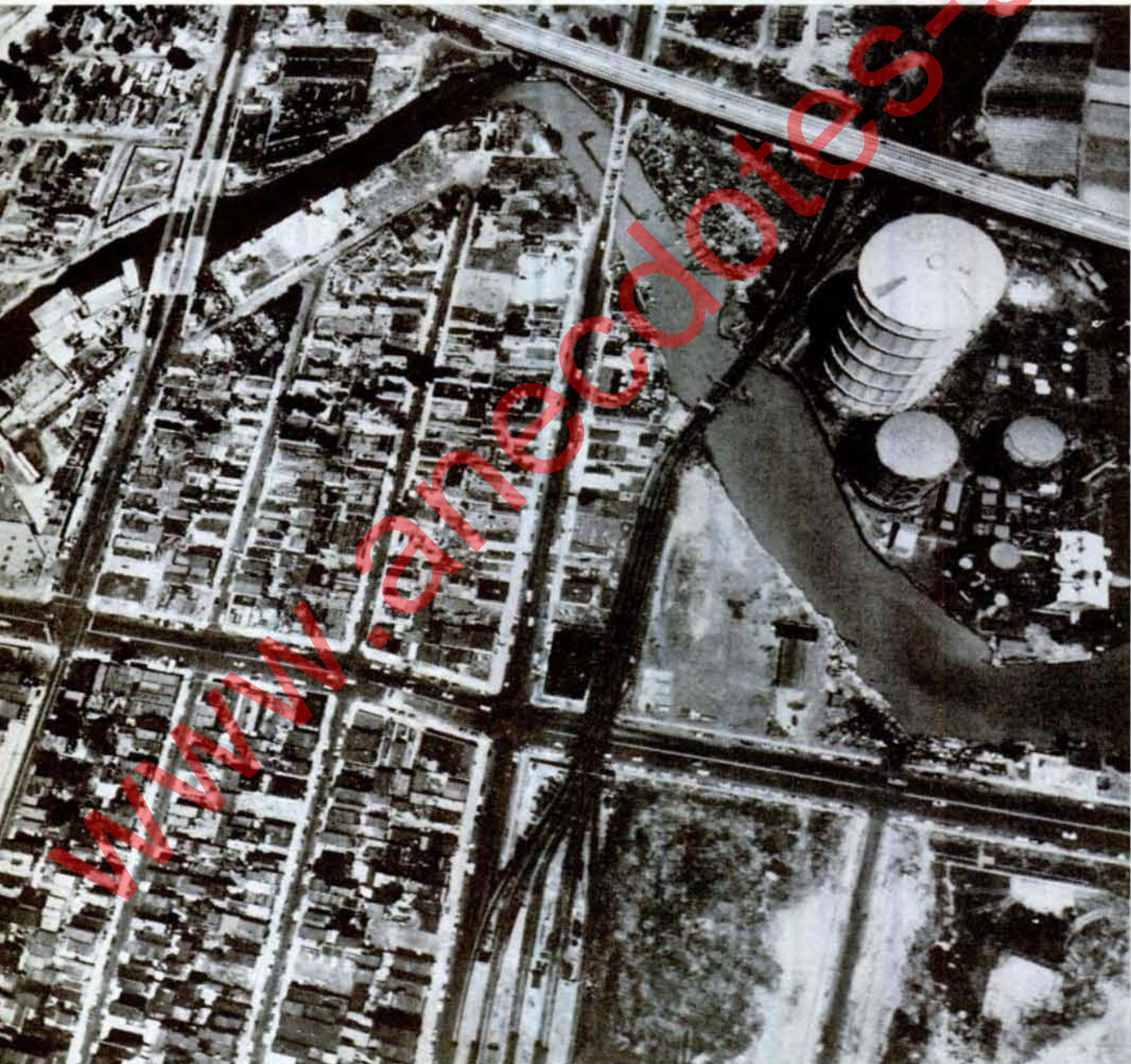


**LOOP MOUNTAIN**, 2,000-foot ridge (which shows up in black) in Pennsylvania Appalachians, shelters

town of Roaring Spring (center). From here road cuts through ridge to McKee Gap at upper left.

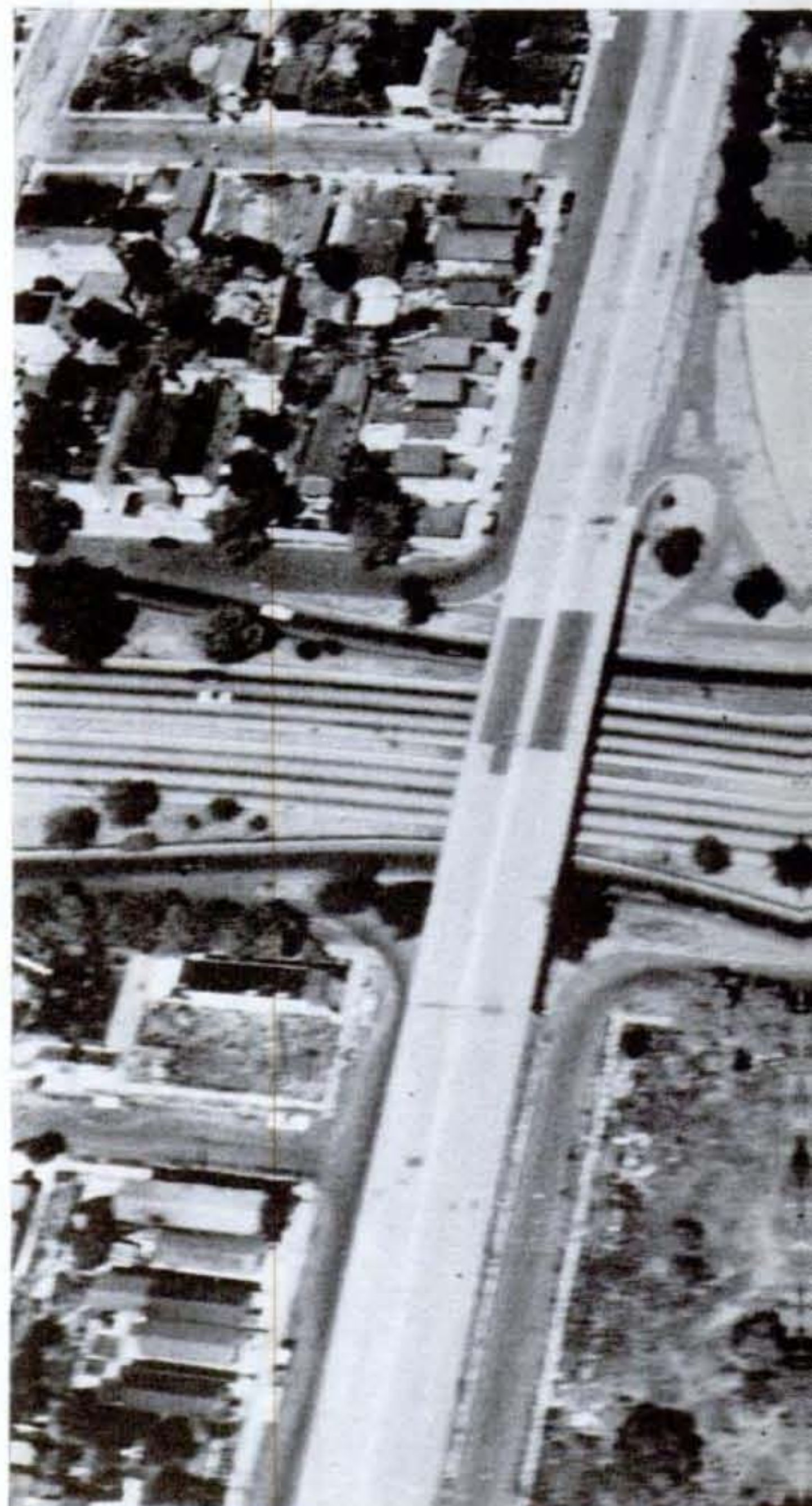


**TRENTON, N.J.** (upper right) fronts on Delaware River above Fairless steel works (light section in



**BROOKLYN** is photographed from 1,200 feet as jet descends for landing. Road at top is Belt Parkway

which circles Brooklyn. Tracks crossing Coney Island Creek are part of New York subway system.



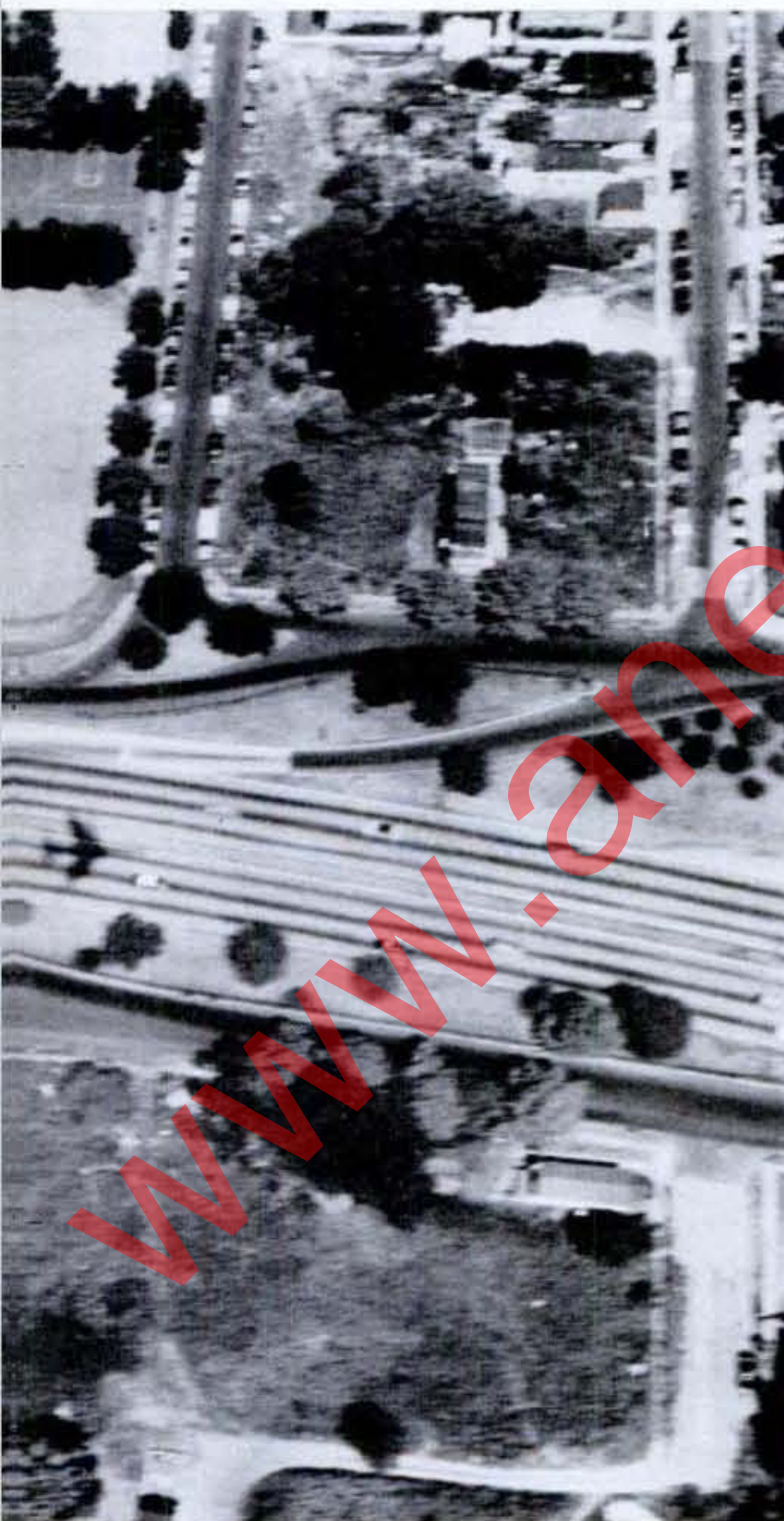
**PLANE'S SHADOW** streaks along Belt Parkway just to right of Coney Island Avenue crossover.



lower center). At left center is Levittown housing project. Plane had dropped to 30,000 feet here.

**NEW YORK APPROACH** is made over New Jersey coast where Garden State Parkway crosses Raritan

River (center), separating Perth Amboy (right) from South Amboy. Tip at far right is end of Staten Island.



Pilot has throttled jet back to 650 mph to avoid disturbing New York City with low altitude shock wave.

**ON LOW PASS** over Lloyd Bennett Field for official time check, the plane's speed blurs Air National

Guard jets lined up on the runway. Major Glenn then circled the field before making his landing.

SUPERSONIC VIEW CONTINUED

# TOUCHDOWN,



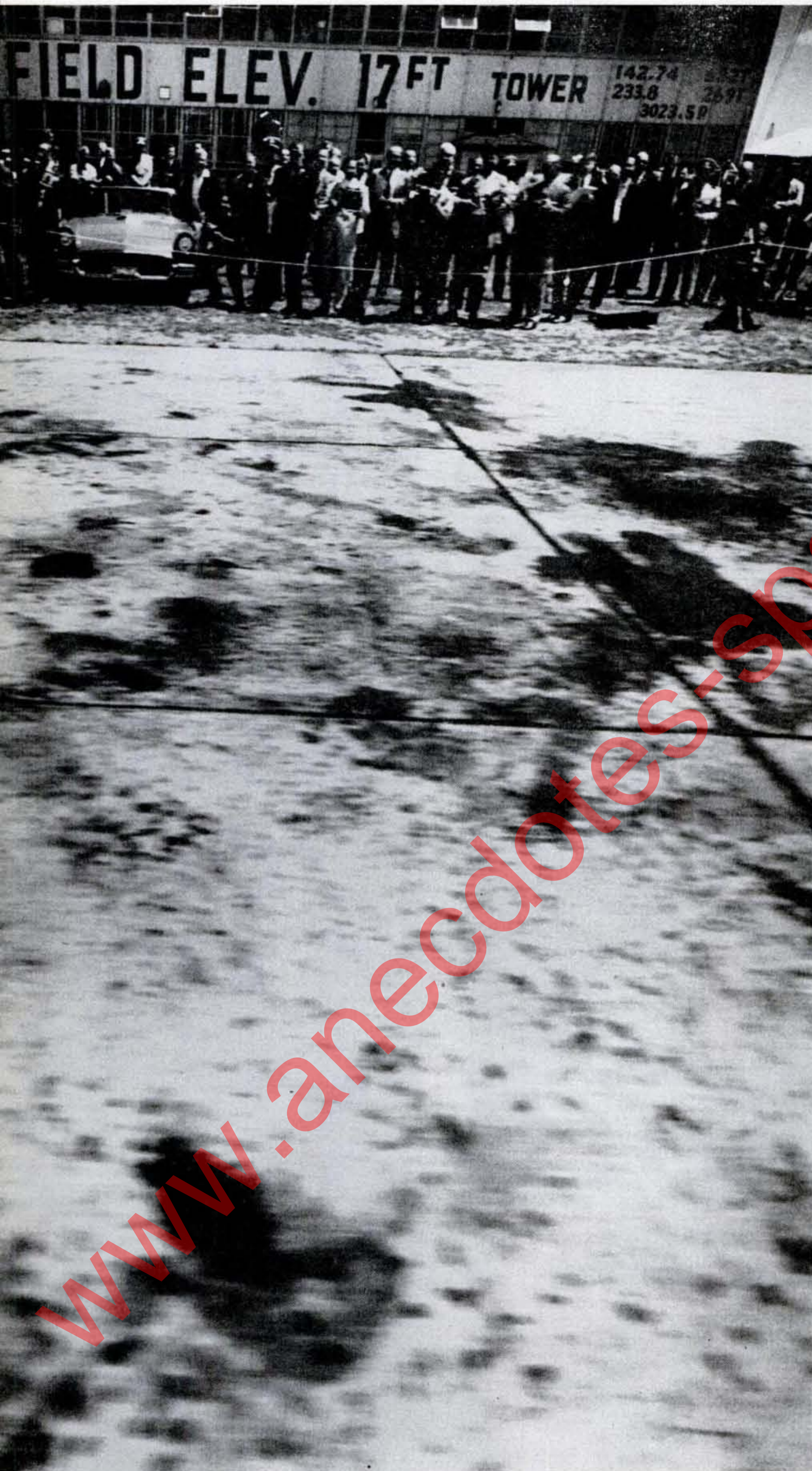
**DESTINATION.** Floyd Bennett Field (*top*), is photographed by portside camera as the jet circles for its final approach. Cloverleaf connects Brooklyn's Flatbush Avenue (*foreground*) with Belt Parkway.

**ON THE GROUND.** jet glides at 40 mph along runway, which appears as series of streaks on picture made from the plane. Crash truck with fire-fighting equipment waits in case jet suffers landing accident.



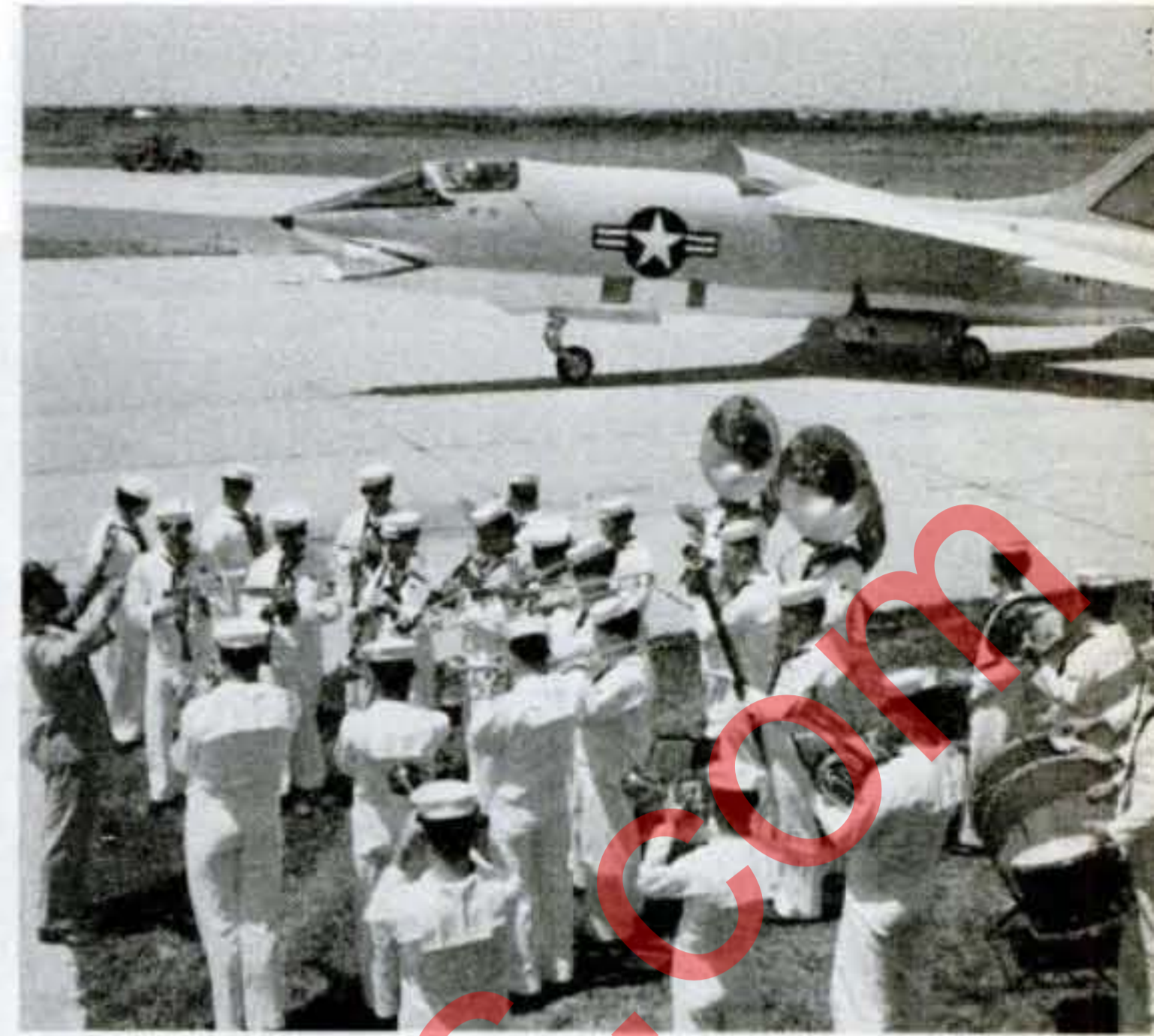
**WAITING CROWD** of reporters and Navy officials, assembled in front of the Floyd Bennett operations

# CAMERA STILL OPERATING



building, is photographed by aerial camera in jet as it brakes to a stop. Camera is controlled by switch

on the pilot's instrument panel and would normally be stopped as soon as aerial mission was completed.



MUSICAL WELCOME is extended by Navy band playing *Anchors Aweigh* and *The Marines' Hymn*.



FAMILY GREETING comes from Glenn's wife, son David, 11, and daughter Lyn, 10, after his landing.

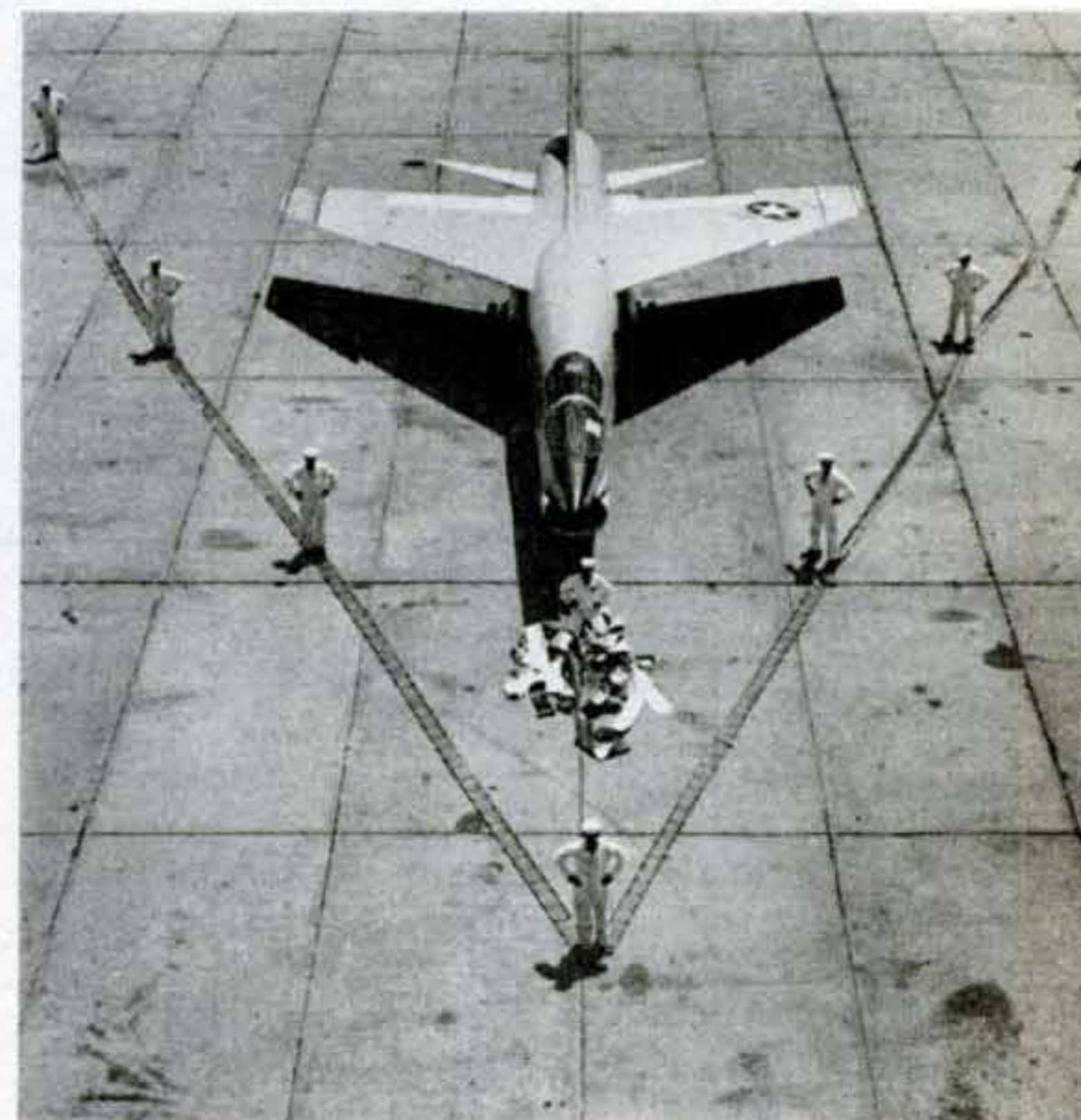


PHOTO RECORD consists of prints spread out beside plane which show half of trip from one camera.